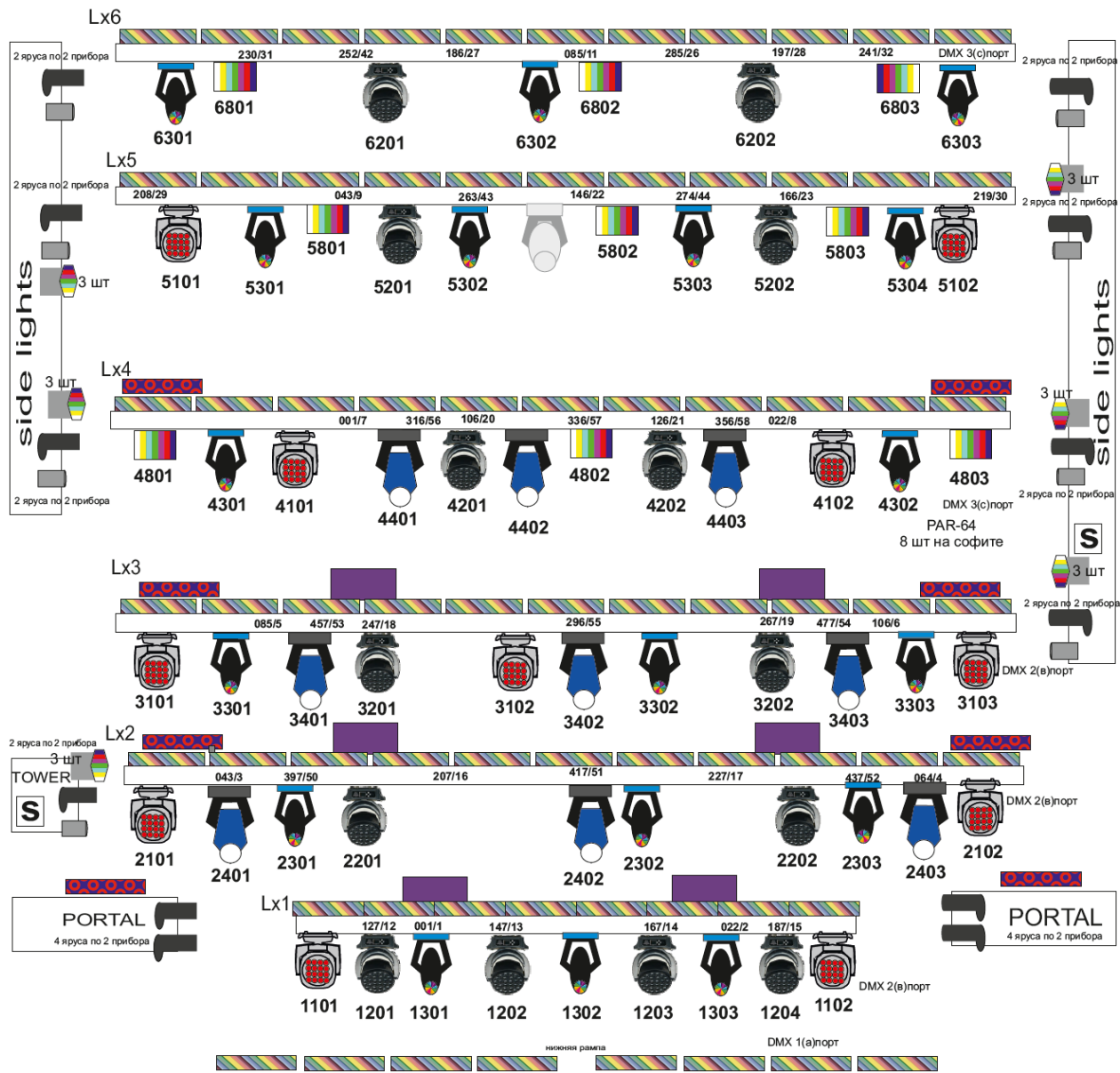


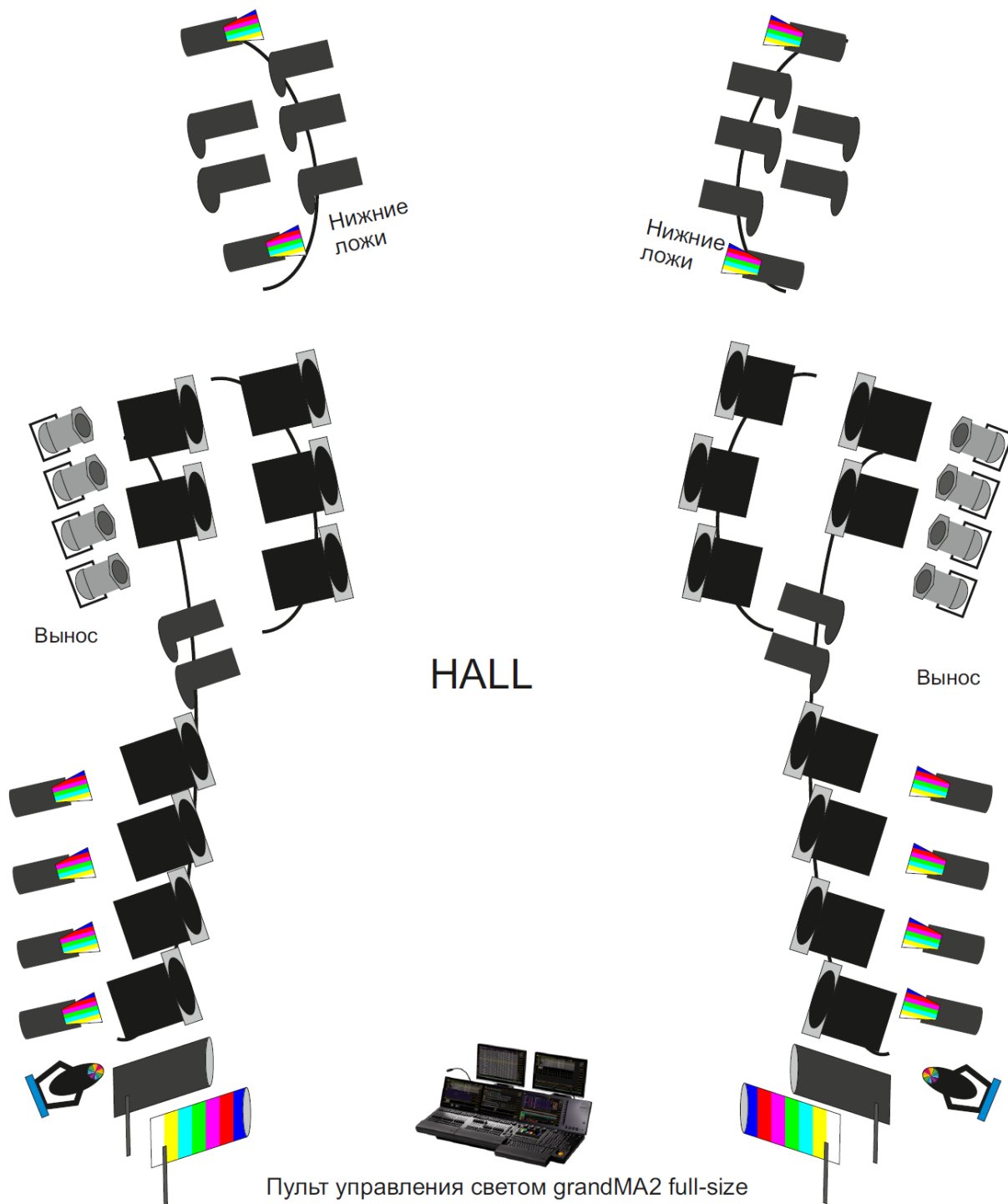
Челябинский Государственный академический театр оперы и балета им.М.И.Глинки(Россия)








- a.leda b-eye k20
- Alpha Wash-1200 (Clay Paky)
- LED WASH Zoom 700
- Dialighting BEAM Pro 7R
- Wash - 575AT(ROBE)
- Black Light 400

- Dialighting LEDMultipar zoom

- LED SPOT-200 (Dialighting)
- Циклорама
- Spotlighting LED 300 RGBW
- led bar 24-15
- led bar15- 4in1
- strob 2000
- PROFILE-1000 (selecon)
- PC-1200(selecon)
- CBТГ -1000x4 (RUSSIA)
- PAR-64 (F.A.L.)



-  - ARENA PC-2000(SELECON)NEW ZEALAND
-  SHADOW QS - ST
(CLAY PAKY)- FOLLOWSPOT
-  Diatheater Follow Spot LED 350
-  -Profile 1000(selecon)
-  -Profile ETC CS spot

Дополнительное оборудование:

- 1 Циклорама
- Spotlighting LED 300 RGBW 2шт.
- 2 Profile ETS CS spot 6 шт
- 3 led bar 24x16 6 шт